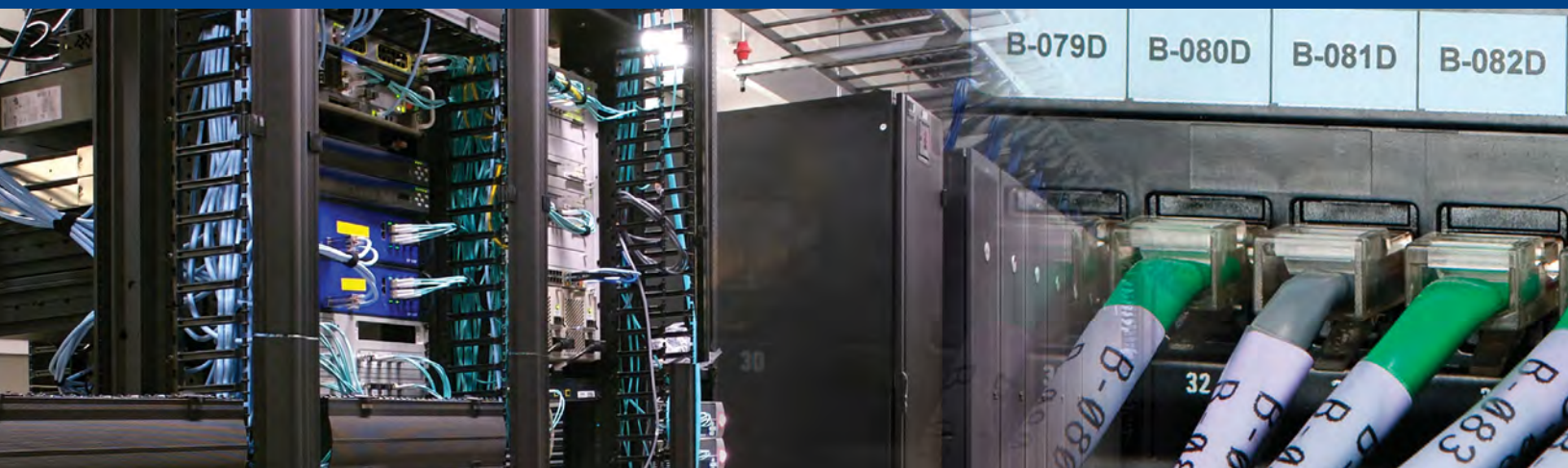




Voice Data Comm Identification

The Complete Data Comm Solution



www.BradyID.com/datacomm

- Label Printers
- Software
- Communications Cabling Labels
- Power & Ground Labels
- Workstation Labels
- Closet Hardware Labels
- Racks, Panels & Frame Labels
- Continuous Labels



Voice Data Comm Identification

The Complete Data Comm Solution

Contents

Page 3	Network Identification And Documentation
Page 4	Building Out The Network
Page 5	Managing Daily Network Operations
Page 6	Managing Moves, Adds & Changes
Page 7	Auditing The Network
Page 8	Network & Data Center Management Solution Selection Guide <ul style="list-style-type: none">– Software Selection– Label Parts Selection– Printer Selection
Page 16	Additional Data Center Solution Options

*Know What You Have,
Where It's Located
And What It's
Connected To.*



Network Identification and Documentation

How it makes your job easier, and your network management more effective.

Network identification and documentation is directly related to performance. When your first priority is keeping the network up and running, identification and documentation are essential. You can quickly and easily resolve issues as they arise, and keep network downtime to a minimum.

Why label your network?

- Quickly locate the cable you're looking for
- Easily identify which component the cable connects to
- Eliminate wasted time spent fishing through hundreds of cables in search of the correct one

Why document your network?

- Solve problems quickly when they arise
- Improve the overall security of your network
- Easily log changes for up to date, accurate network information



Equip your team with the right tools. Brady Tools for the Job:

NetDoc™ Cable Management

Software: Document cable locations and jacks with an MS Excel interface for batch uploading - even without network access.

LabelMark™ Label Design

Software: Design and print labels in MS Excel with the Software MS Excel AddIn.

A Brady portable printer: Identify equipment and cables quickly and easily with a Brady's wide variety of labels and printers.



Building out the Network

Your Challenge: The information about the network is unreliable – or even worse, non-existent.

The last thing you should be doing is detective work – trying to figure out why there is incorrect information on the label, spreadsheet, and AutoCAD drawing.

If changes were made without any documentation or identification, it's difficult to identify the correct cables to punch down on switches and patch panels.

Brady's Network Identification & Documentation Solution:

- **Easily identify your network.** If you label your cables early in the Design Phase, it's easy to locate the cables you need as you build out your network.
- **Store all network information in one place.** Brady's NetDoc™ Software system enables you to store information about your network, data closets, cables, and jack locations in one centralized cable management system.

For example, when subcontractors find a better way to install backbone cables and jack locations, they can document it in the software, then minimally label the cables and jacks with location information using a Brady printer.



How to Avoid Network Downtime:

Only 25% of a tech's service time is spent fixing the problem – the rest is spent searching for it.

- NetDoc™ Cable Management Software helps technicians find things quickly – so they can fix the problem faster, and reduce the cost of repairs.
- When important Telco or Data systems fail, investigations often reveal weak documentation - or none at all.

Design your network to succeed with a Network Documentation and Cable Management System as the central hub of your network topology management.



Before and after cable management software.

Why Comply with ANSI TIA/EIA 606A?

1. **You can shop for a bid.** Don't get locked into working with one vendor who has a unique way to label. ANSI standards create a multi-vendor environment – and keep costs low.
2. **Consistent network management.** ANSI standards establish guidelines so that everyone involved in the administration of your infrastructure labels the same.
3. **It's best practice in the industry.** ANSI standards are consistent throughout the industry. They make your network easier to follow for your current team members – and future ones.

Managing Moves, Adds & Changes

Your Challenge: Stop wasting money buying equipment and cables you already have.

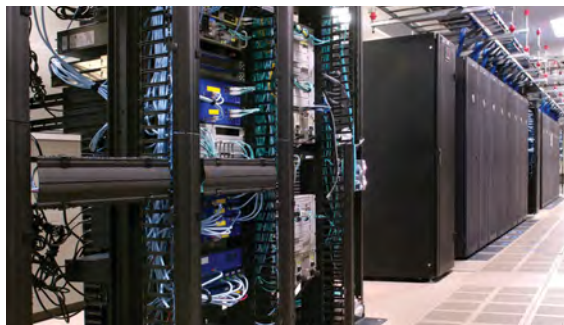
You bought a new server for a move, only to find out later that you already had a server you could have re-purposed for the job. It was that server in the backroom that no one knew what it did – just that it couldn't be unplugged. The server wasn't being used at all, but it wasn't properly labeled or documented.

Brady's Network Identification & Documentation Solution:

Know what you have, where it's located, and what it's connected to.

A network documentation and cable management system can help you keep a history of all the physical changes to your network.

If your network equipment is properly labeled and database is up-to-date, network engineers can plan rack builds for closets and quickly identify cables in the closet or data center for reuse.



The new BMP™71 Label Printer and the BMP™21 Label Printer easily assist with quick changes to labels and asset identifiers. View page 14 for additional printers options.



Get Started with Brady Products:

1. Label all assets and ports on each rack using a **Brady printer**. Or make quick changes to labels as needed.
2. Enter info about the assets and ports into **NetDoc™ Cable Management Software**.
3. Make updates to your network using NetDoc™ Software's **web interface** or run usage reports and traces.

Did you know?

NetDoc™ Software is a centralized database for your network, so you can easily retrieve up-to-date info on your equipment and cables when making moves, adds and changes.

How to Reduce the Cost of Moves, Adds, and Changes

Companies move approximately 25% of its employees each year, with an average labor cost of \$200 - \$300 per move.

MACs are much easier when you know what you have, where it's located and what it's connect to.

- **Proper documentation** can help you quickly understand what needs to be changed, and determine the best approach.
- **Cable management software** and on-hand printers reduce the daily cost of these changes and increase the life of your infrastructure.



Managing Daily Network Operations

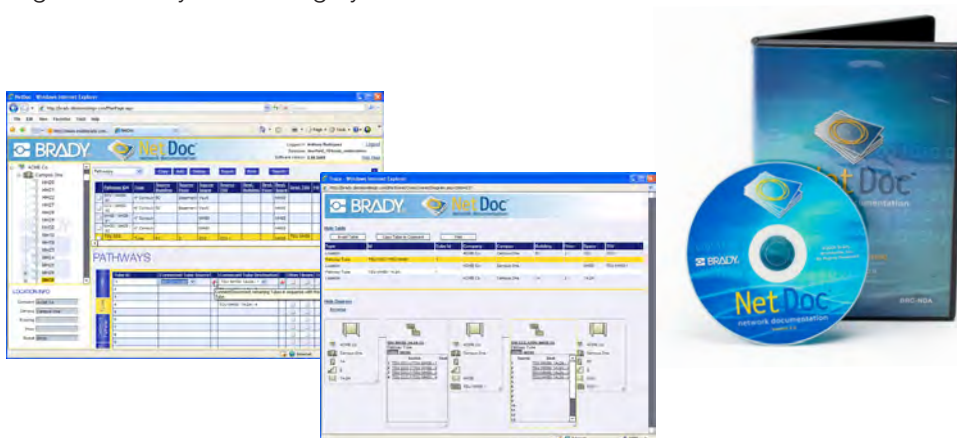
Your Challenge: You have to check too many different software systems to get all the info you need about your network.

It's frustrating when there isn't a way to have a single view of your network. You have to go to one application for information about your physical network equipment, another for data center climate info, and yet another to view the personnel access history. It makes it difficult to glean causal relationships when you can't access all of the information about your network at the same time.

Brady Voice & Data Identification and Documentation Solution:

NetDoc™ software gives you the flexibility to integrate network data the way you want it.

NetDoc™ Cable Management Software stores information about your physical network infrastructure in an open SQL database, so the information can be shared with your other applications. This means you have the flexibility to access the data and easily integrate it with your existing system.



NetDoc™ Software Infrastructure

"Brady's customers in colleges and universities have been on the forefront of integrating NetDoc queries on asset location into their network management systems, which complies with the enhanced 911 legislation for integrated VoIP networks."

NetDoc™ Software and Enhanced 911 (911 and VoIP)

Did you know NetDoc™ Software data can be integrated into your Enhanced 911 call tracing capabilities?

According to FCC rules, companies, agencies, and universities adopting VoIP calling capabilities are required to:

- Deliver all 911 calls to the local emergency call center.
- Inform users of the capabilities and limitations of their VoIP 911 service.

- Deliver the caller's call back number and location information where the emergency call center is capable of receiving it.

NetDoc™ Software is based on an open database, which enables you to use the data to locate the caller and deliver the call back number and location information to the emergency call center.

Auditing the Network

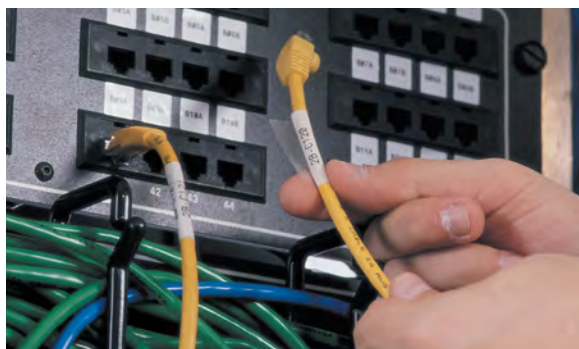
Your Challenge: Your auditing costs have escalated because they are billing you to re-document your network prior to auditing the processes and policies.

If your network is not properly labeled and documented, contractors are forced to recreate the necessary network documentation in order to properly conduct the audit. Audits become much more expensive, because they end up billing you for both the documentation and the audit.

Brady Voice & Data Identification and Documentation Solution:

Keep a documented change history in a searchable cable management application like NetDoc™ Software.

- Audits are faster, easier, and less expensive. If your network is easily identified and documented, contractors can conduct the audit faster – which means less cost to you.
- Easy options for reporting and searching. NetDoc™ Software allows you to easily prepare reports for IT audits, and quickly access information for network restoration after damages occur.



Network Identification and Documentation for Disaster Recovery

No one likes to think about the loss of a facility due to theft, natural, or human-caused disasters. But these events can, and do, happen.

Expedite your disaster recovery by planning ahead with well defined documentation and identified network assets.

- Quickly locate the areas affected by the disaster.
- Identify lost resources using your content management software.
- Assess which connections you need to replace, duplicate or re-route.
- Create detailed reports of the damages in the content management software to send to insurance providers and management teams.



Network & Data Center Management Solution Selection Guide

Brady's network management systems are a cost-effective way to manage your physical network layer. Brady software acts as a network asset tracker, giving you access to information about network layouts, network identification, physical network diagrams, network assets, and more – which means you save time and money when changes need to be made.

Step 1: Select Software

NetDoc™ Cable Management Software



Stop following a tangle of cables around the office. NetDoc™ Cable Management Software allows you to easily document every aspect of your network, including horizontal and backbone cables, hardware, assets, pathways, locations, users and more.

Available NetDoc Services

- Maintenance support
- Training online and on-site

LabelMark™ Labeling Software



LabelMark™ Labeling Software allows you to easily format cable, faceplate and closet labels. The software includes templates for all the Brady labels designed for your application, and has built-in templates to automatically format 110 block and patch panels.

Available LabelMark Services

- Label File conversion
- Training
- Installation

How to read a label part number:

PTL - 21 - 27

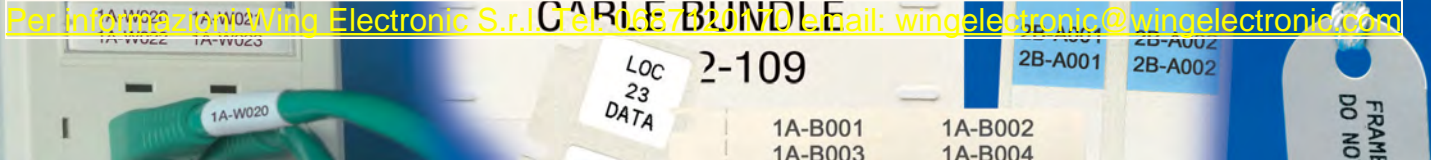
Print Technology:
PTL: TLS 2200® Thermal Labeling System
XSL,X,XC,XF: IDXPRT™ Handheld Labeler
LAT: LaserTab
THT: Benchtop Thermal Transfer Printers (IP, Tagus, MVP Series, X-Plus II Series, BP 1244/1344 Series)

Brady Die Number

Brady Materials:
 See chart for material descriptions. Log on to bradyid.com to access our Technical Data Sheets Database.

Material Descriptions

Material	Description	Ribbon #
B-109	Polyethylene Tag	R4310, R6210
B-124	Non-Adhesive Paper Inserts	N/A - Laser Printer
B-145	Rigid Polyethylene Tag	R6210
B-361	Self-Laminating Polyester	N/A - Laser Printer
B-412	Polypropylene Tag	R4310, R6210
B-422	Permanent Polyester	R4410, R6010
B-423	Permanent Polyester	R4410, R6010
B-425	Permanent Polypropylene	R4310, R6210
B-427	Self-Laminating Vinyl	R4310, R6210
B-430	Clear Polyester	R4410, R6010
B-432	Rough Surface Polyester	R4410, R6010
B-439	Permanent Vinyl	R6010
B-483	Ultra Aggressive Polyester	R4410, R6010
B-489	Ultra Aggressive Polyester	R4310, R6010
B-707	Rough Surface Polyester	N/A - Laser Printer
B-712	Rough Surface Polyester	N/A - Laser Printer
B-747	Permanent Polyester	N/A - Laser Printer
B-759	General Purpose Paper	N/A - Laser Printer



Network & Data Center Management Solution Selection Guide

Step 2: Select Labels

Communications Cabling Labels

Size (mm)	TLS™2200 Labels	IDXPRT™ Labels	BMP™71 Labels	BMP™21 Labels	LaserTab Labels	Benchtop Thermal Transfer Labels
0.750" W x 14' H (19.05 mm W x 4.27 m H),	–	–	–	M21-750-427	–	–
1.000" W x 14' H (25.4 mm W x 4.27 m H)	–	–	–	M21-1000-427	–	–
4 Pair UTP, Cat 5, Cat 5e, Cat 6, Silver Satin						
1.000" W x 1.500" H (25.40 mm W x 38.10 mm H)	PTL-31-427*	XSL-31-427	–	–	–	–
1.000" W x 1.330" H (25.40 mm W x 33.78 mm H)	–	–	M71-31-427	–	LAT-18-361	–
1.000" W x 1.437" H (25.40 mm W x 36.50 mm H)	–	–	–	–	–	THT-9-427
4 Pair STP, 25 Pair Copper						
1.000" W x 2.500" H (25.40 mm W x 63.50 mm H)	PTL-21-427*	XSL-21-427	M71-21-427	–	–	–
1.000" W x 3.167" H (25.40 mm W x 80.44 mm H)	–	–	–	–	LAT-19-361	THT-75-427
1.250" W x 14' H (25.4 mm W x 4.27 m H)	–	–	–	M21-1250-427	–	–
50 Pair Copper						
1.500" W x 4.000" H (38.10 mm W x 101.60 mm H)	PTL-33-427*	XSL-33-427	M71-33-427	–	–	–
1.000" W x 3.750" H (25.40 mm W x 95.25 mm H)	–	–	–	–	–	THT-10-427
Fiber Strand						
1.500" W x 6.000" H (38.10 mm W x 152.40 mm H)	PTL-34-427*	XSL-34-427	M71-34-427	–	–	–
1.000" W x 3.750" H (25.40 mm W x 95.25 mm H)	–	–	–	–	–	THT-10-427
1.500" W x 14' H (25.4 mm W x 4.27 m H)	–	–	–	M21-1500-427	–	–
Fiber/Coax						
1.180" W x 0.788" H (30.00 mm W x 20.00 mm H)	PTLFT-01-425	–	M71FT-01-425	–	–	–
2 Pair Fiber						
1.000" W x 3.375" H (25.40 mm W x 85.73 mm H)	PTL-64-427	–	M71-64-427	–	–	–
4-12 Pair Fiber						
1.000" W x 1.000" H (25.40 mm W x 25.40 mm H)	PTL-19-427*	XSL-19-427	M71-19-427	–	LAT-17-361	–
0.750" W x 0.937" H (19.05 mm W x 23.80 mm H)	–	–	–	–	–	THT-56-427
Flags						
1.000" W x 1.000" H (25.40mm W x 25.40mm H)	–	XF-151-499	–	–	–	–
1.500" W x 0.500" H (38.10mm W x 12.70mm H)	–	XF-152-499	–	–	–	–
1.180" W x 0.788" H (30.00mm W x 20.00mm H)	PTLFP-01-425	–	M71FP-01-425	–	–	–
1.180" W x 0.788" H (30.00mm W x 20.00mm H)	PTLFT-01-425	–	M71FT-01-425	–	–	–
RG-6 Coax, RG-59 Coax						
1.000" W x 2.500" H (25.40 mm W x 63.50 mm H)	PTL-21-427*	XSL-21-427	M71-21-427	–	–	–
1.000" W x 3.167" H (25.40 mm W x 80.44 mm H)	–	–	–	–	LAT-19-361	–
1.000" W x 2.250" H (25.40 mm W x 57.15 mm H)	–	–	–	–	–	THT-75-427
Backbone Cable						
1.000" W x 1.500" H (25.40 mm W x 38.10 mm H)	PTL-31-427*	XSL-31-427	M71-31-427	–	–	–
1.000" W x 1.330" H (25.40 mm W x 33.78 mm H)	–	–	–	–	LAT-18-361	–
1.000" W x 1.437" H (25.40 mm W x 36.50 mm H)	–	–	–	–	–	THT-9-427
1.000" W x 4.000" H (25.40 mm W x 101.60 mm H)	PTL-23-427	XSL-23-427	M71-23-427	–	–	–
1.938" W x 3.150" H (49.23 mm W x 80.00 mm H)	PTL-66-427	–	M71-66-427	–	–	–
Cable Bundles						
0.750" W x 3.000" H (19.05 mm W x 76.20 mm H)	PTL-12-109	–	M71-12-109	–	–	–

*These labels are available in Blue, Brown, Gray, Green, Orange, Purple, Red and Yellow. All PTL label sizes are available in a Plenum rated version (PTL-XX-642) in white only.

Cable sizes vary by manufacturer, so it is always recommended to try a particular size for your application.

Network & Data Center Management Solution Selection Guide

Step 2: Select Labels (Cont'd)

Power & Ground Labels

Size (mm)	TLS™2200 Labels	BMP™71 Labels
145P Tag*		
1.750 x 1.000 (44.45mm W x 25.40mm H)	PTL-110-145-GY	M71-110-145-GY
145C Tag*		
1.206 x 0.758 (19.25mm W x 30.36mm H)	PTL-111-145-GY	M71-111-145-GY
145P Tag - Flame Retardant*		
1.750 x 1.000 (44.45mm W x 25.40mm H)	PTL-110-145FR-GY	M71-110-145FR-GY
145C Tag - Flame Retardant*		
1.206 x 0.758 (19.25mm W x 30.36mm H)	PTL-111-145FR-GY	M71-111-145FR-GY
Non-Adhesive*		
0.750 x 3.000 (19.05mm W x 76.20mm H)	PTL-12-109	M71-12-109
Cable Tags		
1.750 x 1.125 (44.45mm W x 28.57mm H)	PTL-36-109	M71-36-109

*Available in bulk quantities



Workstation Labels

Brady offers larger location labels for the entire faceplate and smaller labels to identify each individual port. Our proprietary adhesives stay attached to the textured plastics widely used in the industry.



Size (mm)	TLS™2200 Labels	IDXPRT™ Labels	BMP™71 Labels	LaserTab Labels	Benchtop Thermal Transfer Labels
Desi-Strip Labels					
1.938 x 0.375 (48.26mm W x 9.52mm H) white	PTL-40-412	X-375-412	M71-40-412	LAT-176-124	THT-150-412
Location ID					
1.000 x 0.375 (25.40mm W x 9.52mm H) white	PTL-16-422	–	M71-16-422	LAT-8-707	THT-3-422
1.000 x 0.375 (25.40mm W x 9.52mm H) clear	PTL-16-430	–	M71-16-430	LAT-8-712	THT-3-430
1.000 x 0.500 (25.40mm W x 12.70mm H) white	PTL-17-422	X-17-422	M71-17-422	LAT-7-707	THT-5-422
1.000 x 0.500 (25.40mm W x 12.70mm H) clear	PTL-17-430	X-17-432-CL-BLK	M71-17-430	LAT-7-712	–
1.500 x 0.375 (38.10mm W x 9.52mm H) white	PTL-45-422	–	M71-45-422	LAT-47-707	THT-147-422
1.500 x 0.375 (38.10mm W x 9.52mm H) clear	PTL-45-430	–	M71-45-430	LAT-47-712	THT-147-430
1.500 x 0.500 (38.10mm W x 12.70mm H) white	PTL-29-422	X-29-422	M71-29-422	LAT-41-707	THT-37-422
1.500 x 0.500 (38.10mm W x 12.70mm H) clear	PTL-29-430	–	M71-29-430	LAT-41-712	THT-37-430
Outlet/Jack ID					
0.500 x 0.375 (12.70mm W x 9.52mm H) white	PTL-44-422	–	M71-44-422	LAT-45-707	THT-148-422
0.500 x 0.375 (12.70mm W x 9.52mm H) clear	PTL-44-430	–	M71-44-430	LAT-45-712	THT-148-430
0.500 x 0.500 (12.70mm W x 12.70mm H) white	PTL-7-422	X-7-422	M71-7-422	LAT-46-707	THT-149-422
0.500 x 0.500 (12.70mm W x 12.70mm H) clear	PTL-7-430	–	M71-7-430	LAT-46-712	THT-149-430
General ID					
0.375 (9.52mm) cont. white	PTL-46-422	XC-375-422	M71-46-422	–	–
0.375 (9.52mm) cont. clear	PTL-46-430	–	M71-46-430	–	–

Network & Data Center Management Solution Selection Guide

Step 2: Select Labels (Cont'd)

Closet Hardware Labels

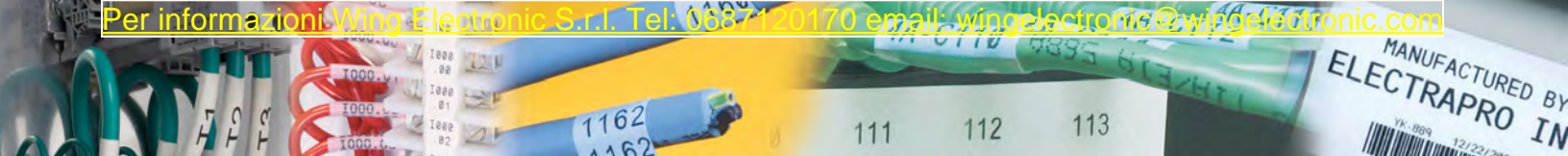
Size (mm)	TLS™2200 Labels	IDXPRT™ Labels	BMP™71 Labels	LaserTab Labels	Benchtop Thermal Transfer Labels
Patch Panel - 4 PORT					
0.375" W x 0.600" H (9.53 mm W x 15.24 mm H)	PTL-39-422	–	M71-39-422	–	–
19.000" W x 0.375" H (482.60 mm W x 9.53 mm H)	–	XC-375-422	–	–	–
2.875" W x 0.375" H (73.03 mm W x 9.53 mm H)	–	–	–	LAT-43-707	–
3.000" W x 0.250" H (76.20 mm W x 6.35 mm H)	–	–	–	–	THT-16-423
Patch Panel - 6 PORT					
0.375" W x 0.600" H (9.53 mm W x 15.24 mm H)	PTL-39-422	–	M71-39-422	–	–
19.000" W x 0.375" H (482.60 mm W x 9.53 mm H)	–	XC-375-422	–	–	–
3.600" W x 0.375" H (91.44 mm W x 9.53 mm H)	–	–	–	LAT-44-707	–
Patch Panel - ID PORT					
0.500 x 0.375 (12.70mm W x 9.52mm H) white	PTL-44-422	–	M71-44-422	LAT-45-707	THT-148-422
0.500 x 0.375 (12.70mm W x 9.52mm H) clear	PTL-44-430	–	M71-44-430	–	THT-148-422
0.500 x 0.500 (12.70mm W x 12.70mm H) white	PTL-7-422	X-7-422	M71-7-422	LAT-46-707	THT-149-422
0.500 x 0.500 (12.70mm W x 12.70mm H) clear	PTL-7-430	–	M71-7-430	LAT-46-712	–
0.500 x 0.750 (12.70mm W x 19.05mm H) clear	PTL-11-432	–	M71-11-432	–	–
0.750 x 0.250 (19.05mm W x 6.35mm H) white	PTL-10-423	–	M71-10-423	–	–
0.750 x 0.250 (19.05mm W x 6.35mm H) clear	PTL-10-432	–	M71-10-423	–	–
Patch Panel / Continuous Tapes					
0.250 (6.35) x continuous clear	PTL-101-432	–	M71-101-432	–	–
0.250 (6.35) x continuous white	PTL-101-483	–	M71-101-483	–	–
0.250 (6.35) x continuous white	PTL-101-489	–	M71-101-489	–	–
0.375 (9.52) x continuous clear	PTL-46-430	–	M71-46-430	–	–
110 Blocks*					
19.000" W x 0.475" H (482.60 mm W x 12.07 mm H)	–	XC-475-412	–	–	–
7.900" W x 0.475" H (200.66 mm W x 12.07 mm H)	–	–	–	LAT-177-124*	–
7.900" W x 0.475" H (200.66 mm W x 12.07 mm H)	–	–	–	LAT-177-124-BL	–
Box Blocks*					
19.000" W x 0.625" H (482.60 mm W x 15.88 mm H)	–	XC-625-412	–	–	–
6.625" W x 0.625" H (168.28 mm W x 15.88 mm H)	–	–	–	LAT-178-759*	–
Lucent Patchmax*					
19.000" W x 0.500" H (482.60 mm W x 12.70 mm H) white	XC-500-422	–	–	–	–
3.062" W x 0.500" H (77.77 mm W x 12.70 mm H)	–	–	–	LAT-175-124*	–
Faceplate					
1.000" W x 0.375" H (25.40 mm W x 9.53 mm H)	–	–	–	LAT-8-707	–
4 Pair Cable					
1.000" W x 1.330" H (25.40 mm W x 33.78 mm H)	–	–	–	LAT-18-361	–
6 Port Grouping On Patch Panel					
3.600" W x 0.375" H (91.44 mm W x 9.53 mm H)	–	–	–	LAT-44-707	–
Faceplate/Patch Panel					
0.500" W x 0.375" H (12.70 mm W x 9.53 mm H)	–	–	–	LAT-45-707	–
1.500" W x 0.500" H (38.10 mm W x 12.70 mm H)	–	–	–	LAT-47-707	–

Lasertab Lanpak

Brady offers a LAT-LANPAK, which features 10 sheets of all of the label sizes below.

These sizes represent our more popular label sizes:

Part Number	Application	Size	Part Number	Application	Size
LAT-8-707	Faceplate	1.000 x 0.375 (25.40 x 9.53)	LAT-47-707	Faceplate/Patch Panel	1.500 x 0.500 (38.10 x 12.70)
LAT-18-361	4 Pair Cable	1.000 x 1.330 (25.40 x 33.78)	LAT-176-124	Faceplate Desi-Strips	1.980 x 0.380 (50.29 x 9.65)
LAT-44-707	6 Port Grouping on Patch Panel	3.600 x 0.375 (91.44 x 9.53)	LAT-177-124-WH	110 Blocks, in White	7.910 x 0.480 (200.91 x 12.19)
LAT-45-707	Faceplate/Patch Panel	0.500 x 0.375 (12.70 x 9.53)	LAT-177-124-BL	110 Blocks, in Blue	7.910 x 0.480 (200.91 x 12.19)



Network & Data Center Management Solution Selection Guide

Step 2: Select Labels (Cont'd)

Rack, Panel & Frame Labels

Size	TLS™2200 Labels	IDXPERT™ Labels	BMP™71 Labels	LaserTab Labels	Benchtop Thermal Transfer Labels
GENERAL ID					
0.375" W x 16' H (9.530 mm W x 4.88 m H)	—	—	M21-375-499	—	—
0.750" W x 21' H (19.050 mm W x 6.400 m H)	—	—	M21-750-430	—	—
0.375" W x 21' H (9.530 mm W x 6.400 m H)	—	—	M21-375-423	—	—
0.375" W x 21' H (9.530 mm W x 6.400 m H)	—	—	M21-375-430	—	—
0.750" W x 21' H (19.050 mm W x 6.400 m H)	—	—	M21-750-423	—	—
0.375" W x 16' H (9.530 mm W x 4.88 m H)	—	—	M21-375-499-TB	—	—
0.500" W x 16' H (12.700 mm W x 4.88 m H)	—	—	M21-500-499-TB	—	—
0.500" W x 16' H (12.700 mm W x 4.88 m H)	—	—	M21-500-499	—	—
0.500" W x 21' H (12.700 mm W x 6.400 m H)	—	—	M21-500-423	—	—
0.500" W x 21' H (12.700 mm W x 6.400 m H)	—	—	M21-500-430	—	—
0.750" W x 16' H (19.050 mm W x 4.88 m H)	—	—	M21-750-499	—	—
0.500" W x 2.000" H (12.70 mm W x 50.80 mm H)	PTL-61-483	X-61-483	M71-61-483	—	—
0.750" W x 4.000" H (19.05 mm W x 101.60 mm H)	PTL-62-483	—	M71-62-483	—	—
4.000" W x 300' H (101.60 mm W x 91.44 m H)	—	—	—	—	THT-107-483
0.750" W x 8.000" H (19.05 mm W x 203.20 mm H)	PTL-63-483	—	M71-63-483	—	—
1.375" W x 1.000" H (34.93 mm W x 25.40 mm H)	PTL-65-483	—	M71-65-483	—	—
1.500" W x 1.000" H (38.10 mm W x 25.40 mm H)	PTL-31-483	—	M71-31-483	—	—
1.500" W x 0.750" H (38.10 mm W x 19.05 mm H)	PTL-30-483	X-30-422	M71-30-483	—	—
1.500" W x 1.500" H (38.10 mm W x 38.10 mm H)	PTL-32-483	—	M71-32-483	—	—
2.000" W x 1.000" H (50.80 mm W x 25.40 mm H)	PTL-20-422	—	M71-20-422	—	THT-17-483
1.875" W x 0.833" H (47.63 mm W x 21.16 mm H)	—	—	—	LAT-13-707	—
2.000" W x 1.000" H (50.80 mm W x 25.40 mm H)	PTL-20-483	—	M71-20-483	—	THT-17-483
3.000" W x 1.000" H (76.20 mm W x 25.40 mm H)	PTL-22-422	—	M71-22-422	—	THT-18-483
1.750" W x 1.000" H (44.45 mm W x 25.40 mm H)	—	—	—	LAT-24-747	—
3.000" W x 1.900" H (76.20 mm W x 48.26 mm H)	PTL-37-422	—	M71-37-422	—	THT-19-483
3.00"W x 1.90" H Arc Flash Danger Header	PTL-37-483-DANGER	—	M71-37-483-DANGER	—	—
3.00"W x 1.90" H Arc Flash Warning Header	PTL-37-483-WARNING	—	M71-37-483-WARNING	—	—
4.000" W x 1.000" H (101.60 mm W x 25.40 mm H)	PTL-23-422	—	M71-23-422	—	THT-107-483
2.000" W x 1.437" H (50.80 mm W x 36.50 mm H)	—	—	—	LAT-33-707	—
4.000" W x 1.900" H (101.60 mm W x 48.26 mm H)	PTL-38-422	—	M71-38-422	—	—
3.000" W x 1.437" H (76.20 mm W x 36.50 mm H)	—	—	—	LAT-34-707	—
BRADYBONDZ™ Labels					
4.000" W x 1.000" H (101.60 mm W x 25.40 mm H)	PTL-23-483	—	M71-23-483	—	—
0.500" W x 50' H (12.70 mm W x 15.24 m H) White	PTL-8-483	—	M71-8-483	—	—
0.500" W x 50' H (12.70 mm W x 15.24 m H) White	PTL-8-489	—	M71-8-489	—	—
1.000" W x 50' H (25.40 mm W x 15.24 m H) White	PTL-42-483	—	M71-43-483	—	—



Network & Data Center Management Solution Selection Guide

Step 2: Select Labels (Cont'd)

Continuous Tapes

Size (mm)	TLST TM 2200 Labels	IDXPRT TM Labels	BMP TM 71 Labels
0.250" W x 50' H (6.35 x 15.24m) White	PTL-101-483	–	M71-101-483
0.250" W x 50' H (6.35 x 15.24m) White	PTL-101-489	–	M71-101-489
0.375" W x 50' H (9.53 x 15.24m) White	PTL-46-422	XC-375-422	M71-46-422
19.00" W x 0.375" H (482.60 x 9.53m) Clear	–	XC-375-422	–
0.375" W x 50' H (9.53 x 15.24m) Clear	PTL-46-430	–	M71-46-430
0.500" W x 50' H (12.70 x 15.24m) White	PTL-8-422	XC-500-422	M71-8-422
0.500" W x 50' H (12.70 x 15.24m) Clear	PTL-8-430	–	M71-8-430
0.500" W x 50' H (12.70 x 15.24m) Clear	PTL-8-432	–	M71-8-432
0.500" W x 50' H (12.70 x 15.24m) White	PTL-8-439•	–	M71-8-439
1.000" W x 50' H (25.40 x 15.24m) White	PTL-42-439•	–	M71-42-439
1.000" W x 50' H (25.40 x 15.24m) Clear	PTL-42-432**	XC-1000-432-CL-BLK	M71-42-432
19.000" W x 1.000" H (482.60 x 25.40)	–	XC-1000-483	–
1.000" W x 50' H (25.40 x 15.24m) White	PTL-42-489	–	M71-42-489
1.300" W x 50' H (33.02 x 15.24m) Clear	PTL-100-432***	–	M71-100-432
1.300" W x 50' H (33.02 x 15.24m) White	PTL-100-483***	–	M71-100-483
1.300" W x 50' H (33.02 x 15.24m) White	PTL-100-489***	–	M71-100-489
1.900" W x 50' H (48.26 x 15.24m) Clear	PTL-43-432	–	M71-43-432
1.900" W x 50' H (48.26 x 15.24m) White	PTL-43-489	–	M71-43-489
1.900" W x 50' H (48.26 x 15.24m) White	PTL-43-483	–	M71-43-483
1.900" W x 50' H (48.26 x 15.24m) White	PTL-43-439•	–	M71-43-439
19.000" W x 0.500" H (482.60 x 12.70) BLACK ON WHITE	XC-500-580-WT-BK*	–	–
19.000" W x 1.000" H (482.60 x 25.40) BLACK ON WHITE	XC-1000-580-WT-BK*	–	–
19.000" W x 1.500" H (482.60 x 38.10) BLACK ON WHITE	XC-1500-580-WT-BK*	–	–

** B-432 material available in additional label sizes. Red, white and blue ribbon colors also available.

*** This is the minimum width continuous tape needed to print a 3/4" font.

- Available in colors listed below

*Available Colors:

WHITE ON BLUE

BLACK ON YELLOW

BLACK ON ORANGE

WHITE ON RED

RED ON WHITE



PRODUCT FEATURE:

Printing on more than 30 types of label materials - the BMPTM71 Label Printer gives you over 400 label parts to choose from. With built-in design wizards, high speed print of 1.5 labels per second, and storage space for over 100,000 label files, the BMPTM71 Label Printer is your faster, easier way to print labels.



Network & Data Center Management Solution Selection Guide

Step 3: Select Printer



BMP™21 Label Printer

This entry-level portable printer is simple to operate and quick to print. Ideal for printing wraparound labels, self-laminating labels, and PermaSleeve™ Heat Shrink Tubing.



IDXPRT™ Labeling Printer

This portable labeler can print labels for panels, faceplates, cables, racks, public networks and more. Prints on die-cut labels, self-laminating labels as well as continuous tapes at 300 dpi.



BMP™71 Label Printer

Brady's most versatile portable printer. It has voice/data design wizards, high speed print and a large display. Prints on 30 different materials and more than 400 continuous and die-cut labels, up to 2" wide.



TLS-PC Link™ Thermal Labeling System

This portable printer offers multiple material configurations for printing wire and cable markers, patch panels, circuit board, and asset ID labels.

**Operates in PC-connected mode only.*



TLS®2200 Thermal Transfer Printer

This medium-volume portable printer offers programmed voice/data features. Ideal for creating barcode labels, wire and cable markers, patch panel labels, asset ID labels and circuit board ID.

Brady Portable Label Printer Selection Guide

Printer Features		BMP™21 Label Printer	IDXPRT™ Labeling Printer	BMP™71 Label Printer	TLS-PC Link™ Thermal Transfer Printer	TLS 2200® Thermal Transfer Printer
Info On Label	Max Print Width	< Max Label Width (.750")	1.250"	1.810"	1.810"	1.810"
	Max Print Length	Data Not Available	Data Not Available	Up to 40" (1016 mm)	6.000" (152.40 mm)	Up to 54" (1371.60 mm)
	Color Capability	Single	Single	Single	Single	Single
	Max Label Width	.750"	1.500"	2.000"	2.000"	2.000"
	Print Resolution	203 dpi	300 dpi	300 dpi	203 dpi	203 dpi
	Barcode on Label	Code 39 and 128	1D linear; More available through Desktop LabelMark Software	1D linear; More available through Desktop LabelMark Software	1D linear; More available through Desktop LabelMark Software	1D linear; More available through Desktop LabelMark Software
Data Formatting Functions	Multi-line Print	Yes	Yes	Yes	Data Not Available	Yes
	Print Rotation	No	Yes	Yes	Data Not Available	Yes
	Serialization	Yes	Yes	Yes	Data Not Available	Yes
Printed Label Volume	Max Labels Per Day	50 labels/day	250 labels/day	1,000 labels/day	750 labels/day	750 labels/day
	Print Speed	Data Not Available	Data Not Available	Data Not Available	Data Not Available	Data Not Available
	Hours of Operation	Data Not Available	Data Not Available	Data Not Available	Data Not Available	Data Not Available
Mobility	Portability	Yes	Yes	Yes	Yes	Yes
	Stand Alone Printing	Yes	Yes	Yes	No	Yes
Use with Keyboard	Data Entry other than PC	ABC Layout	ABC/QWERTY	QWERTY Layout	Data Not Available	ABC Layout
Use with PC	PC Connectivity Options	None Available	Yes	USB	Serial	Serial

Network & Data Center Management Solution Selection Guide

Step 3: Select Printer



**BBP™81
Label Printer**

Designed for high volume printing, this 300 dpi desktop printer can print a wide variety of materials - including paper, polyester, metalized polyester, polyimide, and PermaSleeve™ materials.



**Bradyprinter™
PR Plus Printer**

Ideal for high volume cable identification, this desktop printing system prints Heatex products, wire markers, and polyester labels where material has a long life expectancy.



**IP™ Thermal
Transfer Printer**

Available in either 300 or 600 dpi, this desktop printer offers material recognition, automatic formatting, and user-friendly features for printing labels, sleeves and wire and cable markers.



**BBP™11
Label Printer**

This entry level desktop printer has 300 dpi print resolution and a small footprint. Ideal for low to medium volume printing, including labels, cable markers, sleeves and more.

Brady Benchtop Label Printer Selection Guide

	Printer Features	Brady BBP™81 Label Printer	Bradyprinter™ PR Plus Printer	Brady IP™ Thermal Transfer Printer	BBP™11 Label Printer
Info On Label	Max Print Width	4.090"	4.150"	4.160"	4.170"
	Max Print Length	32"	78"	20" for 600dpi, 40" for 300dpi	40"
	Color Capability	Single	Single	Single	Single
	Max Label Width	4.500"	4.560"	4.160"	4.170"
	Print Resolution	300 dpi	300 dpi	300 dpi	300 dpi
	Barcode on Label	Data Not Available	Data Not Available	Approx. 35 1D and 2D barcodes	Data Not Available
Data Formatting Functions	Multi-line Print	Data Not Available	Data Not Available	Data Not Available	Data Not Available
	Print Rotation	Data Not Available	Data Not Available	Data Not Available	Data Not Available
	Serialization	Data Not Available	Data Not Available	Data Not Available	Data Not Available
Printed Label Volume	Max Labels Per Day	5,000 labels/day	5,000 labels/day	5,000 labels/day	1,000 labels/day
	Print Speed	up to 8"/sec	up to 9"/sec	up to 8"/sec	up to 3"/sec
	Hours of Operation	12hrs / 5days	12hrs / 5days	8hrs / 5days	8hrs / 5days
Mobility	Portability	No	No	No	No
	Stand Alone Printing	No	No	Available with a flashcard	No
Use with Keyboard	Data Entry other than PC	Data Not Available	Data Not Available	Data Not Available	Data Not Available
Use with PC	PC Connectivity Options	Parallel, Serial, USB 2.0, Ethernet 10/100	Serial, USB 2.0 and Ethernet 10/100	Serial, USB 2.0 and Ethernet 10/100	Serial, Parallel, USB, Network (ethernet)